

DIV/DIS model



Draaispoelmeters model DIV/DIS

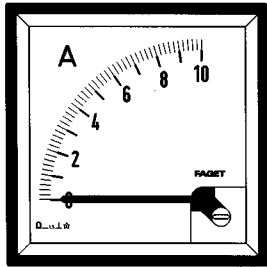
Draaispoelmeters voor gelijkstroom. Vierkante uitvoering met verwisselbare schaal, behalve model DIS144. Voor inbouw volgens DIN 43700 met zwarte frontrand.

Moving coil meters model DIV/DIS

Moving coil meters for direct current. Square model with interchangeable scale, apart from model DIS144. For flush mounting according to DIN 43700 with black front frame.

Drehschul Meßgeräte Modell DIV/DIS

Drehschul Meßgeräte für Gleichstrom. Quadratische Ausführung mit austauschbarer Skala (außer Modell DIS144). Einbau nach DIN 43700 mit schwarzem Frontrahmen.



				DIV48	DIV72	DIV96	DIS144		
		a(mm)		48 x 48	72 x 72	96 x 96	144 x 144		
		b(mm)		44 x 44	67 x 67	91 x 91	136 x 136		
		c(mm) ¹⁾		45 ^{+0,6} x 45 ^{+0,6}	68 ^{+0,7} x 68 ^{+0,7}	92 ^{+0,8} x 92 ^{+0,8}	138 ⁺¹ x 138 ⁺¹		
		d(mm)		58	60	60	88		
		e(mm)		42	65	94	126		
		(kg)		0,1	0,2	0,3	0,9		
		REF.		REF.	REF.	REF.	REF.		
		mV	mV	mV	mV	mV	mV		
μA	40	3DIV48	300	3DIV72	300	3DIV96	300	3DIS14	600
	60	3DIV48	1500	3DIV72	1500	3DIV96	1500	3DIS14	3200
	100	311601	120	316862	120	316881	120	3DIS14	270
	150	3DIV48	600	3DIV72	600	3DIV96	600	3DIS14	1500
	250	3DIV48	"	3DIV72	"	3DIV96	"	3DIS14	"
	400	3DIV48	"	3DIV72	"	3DIV96	"	3DIS14	"
	600	3DIV48	"	3DIV72	"	3DIV96	"	3DIS14	"
mA	1	3BD401	40	3BD701	40	3BD901	40	3DD033	95
	1,5	3DIV48	240	3DIV72	240	3DIV96	240	3DIS14	500
	2,5	3DIV48	"	3DIV72	"	3DIV96	"	3DIS14	"
	4	3DIV48	"	3DIV72	"	3DIV96	"	3DIS14	"
	5	3DIV48	17	3DIV72	17	3DIV96	17	3DIS14	"
	6	3DIV48	70	3DIV72	70	3DIV96	70	3DIS14	"
	10	3DIV48	"	3DIV72	"	3DIV96	"	3DIS14	"
	15	3DIV48	"	3DIV72	"	3DIV96	"	3DIS14	17
	20	3BD402	"	3BD702	"	3BD902	"	3DD031	70
	25	3DIV48	"	3DIV72	"	3DIV96	"	3DIS14	"
	40	3DIV48	"	3DIV72	"	3DIV96	"	3DIS14	"
	50	3DIV48	140	3DIV72	140	3DIV96	140	3DIS14	"
	60	3DIV48	"	3DIV72	"	3DIV96	"	3DIS14	"
	100	3DIV48	"	3DIV72	"	3DIV96	"	3DIS14	"
	150	3DIV48	"	3DIV72	"	3DIV96	"	3DIS14	"
250	3DIV48	60	3DIV72	60	3DIV96	60	3DIS14	60	
400	3DIV48	"	3DIV72	"	3DIV96	"	3DIS14	"	
600	3DIV48	"	3DIV72	"	3DIV96	"	3DIS14	"	
A	1	311624	"	312624	"	313624	"	3DIS14	"
	1,5	311625	"	312625	"	313625	"	3DIS14	"
	2,5	311626	"	312626	"	313626	"	3DIS14	"
	4	311627	"	312627	"	313627	"	3DIS14	"
	6	311628	"	312628	"	313629	"	3DIS14	"
	10	311629	"	312629	"	313630	"	3DIS14	"
	15	311630	"	312630	"	313631	"	3DIS14	"
	25	-	"	312631	"	313632	"	3DIS14	"
	40	-	"	312632	"	313633	"	3DIS14	"
	60	-	"	312633	"	313634	"	3DIS14	"

¹⁾ Paneelopening.

¹⁾ Panel cut-out.

¹⁾ Schalttafelauausschnitt.